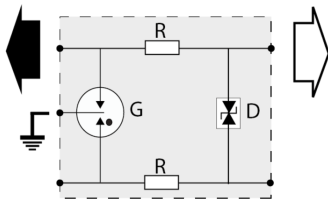
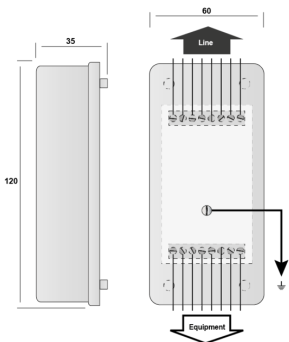


B280-T



- ✦ 2-pair surge protection unit
- ✦ For Telephone lines
- ✦ Removable protection circuit
- ✦ Wall mounting and screw connection
- ✦ UL497 A&B



P: 3-electrode GDT
R: Resistor
D: Clamping diode

Electrical Characteristics		
Network		RTC, ADSL, SDSL, SHDSL
Nominal line voltage	Un	150 V
Max. DC operating voltage	Uc	170 Vdc
Max. frequency	f max.	> 10 MHz
Insertion loss		< 1 dB
Max. load current @25°C	IL	300 mA
Max. discharge current max. withstand @ 8/20 µs by pole	Imax	20 kA
Protection mode(s)		Common/Differential mode
Protection Level C3 (10/1000µs), 300 applications@10 A, X-X (Line/Line)	Up	220 V
Protection level C3 (10/1000µs), 300 applications@10 A, X-C (Line/Earth)	Up	20 V
Impulse current 2 x 10/350µs Test - D1 Category	limp	2.5 kA
Nominal discharge current C2 Category	In	5 kA
Line resistance		< 4.7 Ohm
Mechanical Characteristics		
Technology		GDT+TVS diode
SPD configuration		2 pairs
Connection to Network		By screw terminal: cross section 0.4-1.5mm²
Format		Wall mounting box
Mounting		Wall mounting by screws (not supplied)
Housing material		Thermoplastic UL94 V-0
Operating temperature	Tu	-40/+85°C
Protection rating		IP20
Failsafe mode		Short-circuit - transmission cut-off - fault mode 2
Spare module(s)		S280-T
Dimensions		See diagram
Weight		0.123 kg
Standards		
Standards compliance		IEC 61643-21 / EN 61643-21 / UL497B
Certification		UL 497B
Part number		
72726		