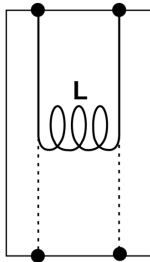
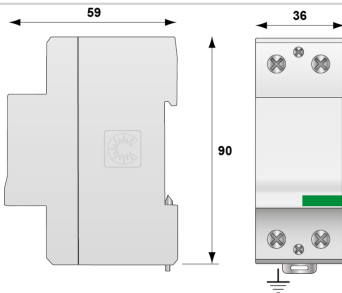


DSH35



- ✦ Coordination inductors for surge protectors
- ✦ For use with the DS series
- ✦ 35 A



L: Inductor

**Electrical Characteristics**

Max. AC operating voltage	Uc	500 Vac
Max. load current @25°C	IL	35 A
Line inductance (± 10 %)		15 µH

**Mechanical Characteristics**

Connection to Network		By screw terminals: 6-35mm <sup>2</sup>
Format		1-pole modular box
Mounting		Symmetrical rail 35 mm (EN 60715)
Housing material		Thermoplastic UL94 V-0
Operating temperature	Tu	-40/+85°C
Protection rating		IP20
Wiring mode		1 DSH in series on each active wire
Dimensions		See diagram
Weight		0,344 kg

**Part number**

360806