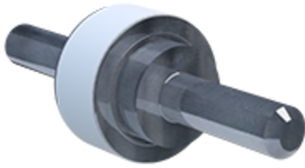




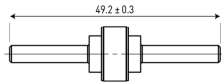
# CITEL

## Isolating spark gap (ISG)

### BF P100 600/20



- ✦ Isolating spark gap
- ✦ Outdoor application
- ✦ Max. discharge current: 100 kA
- ✦ EN 62561-3 compliance



#### Electrical Characteristics

Rated DC withstand voltage	Uw DC	480 V
Rated AC withstand voltage	Uw AC	330 V
Max. discharge current max. withstand @ 8/20 μs by pole	I <sub>max</sub>	100 kA
Impulse current by pole max. withstand 10/350 μs by pole	I <sub>imp</sub>	50 kA
Classification following IEC 62561-3		N
Rated impulse sparkover voltage 1kV/μs	U <sub>r limp</sub>	1300 V

#### Mechanical Characteristics

Technology		Gas discharge tube
Connection to Network		Wire (BF PS) wire terminal (BF PC)
Operating temperature	T <sub>u</sub>	-40/+85°C
Operating and storage temperature		-40°C / +90°C
Protection rating		IP67
Number of units per package		20 units per cardboard
Dimensions		See diagram
Weight		19.4 kg

#### Standards

Standards compliance		EN 62561-3
RohS compliance		Yes

#### Part number

90231389

