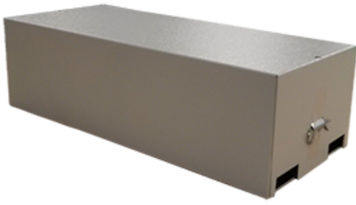
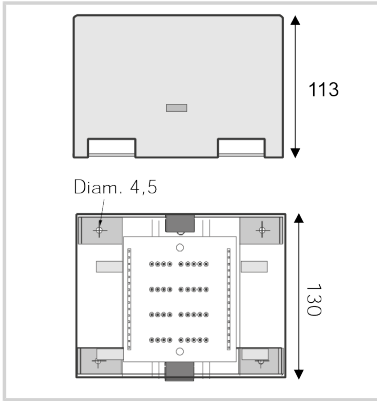




CITEL



- ›Metal enclosures for E280
- ›Max. number of pairs : 8



Electrical Characteristics

Network		Low current
Max. frequency	f max.	20 MHz
Insertion loss		< 1 dB
Max. load current @25°C	IL	10 A
Max. discharge current <i>max. withstand @ 8/20 μs by pole</i>	Imax	10 kA
Nominal discharge current <i>C2 Category</i>	In	5 kA
Impulse current <i>2 x 10/350 μs Test - D1 Category</i>	Iimp	2.5 kA

Mechanical Characteristics

SPD configuration		8 pairs max
Format		Metallic box
Mounting		Wall
Housing material		Metallic
Operating temperature	Tu	-40/+85°C
Protection rating		IP20
Connection		screw terminal - max. section 1,5 mm ²
Max. number of E280s		4.0000
Max. number of pairs		8.0000
Dimensions		See diagram

Part number

71347

