



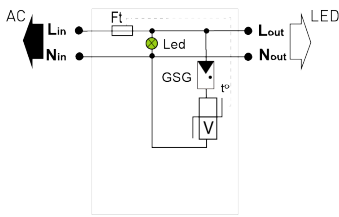
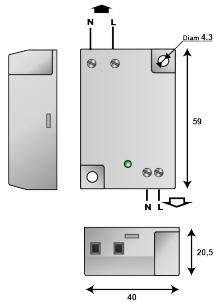
CITEL



Surge protector for LED lighting system Class 2

MLPC-VG2-230L-V

- ▶ Type 2 (or 3) surge protectors for LED
- ▶ Class 2
- ▶ Very compact
- ▶ Plate mounting
- ▶ Screw terminal connection
- ▶ Status indicator
- ▶ Disconnection AC end of life
- ▶ EN 61643-11 compliance



V: Varistor
 GSG: Specific gas tube
 LED: Disconnection indicator
 Ft: Thermal fuse
 t: Thermal system disconnection

Electrical Characteristics			
SPD type	IEC	2+3	
Network		220-240 V Single-phase	
AC system		TT-TN	
Max. AC operating voltage	Uc	320 Vac	
Max. load current @25°C	IL	10 A	
Temporary Over Voltage (TOV) Characteristics - 5 sec. Without disconnection	UT	335 Vac withstand	
Temporary Over Voltage (TOV) Characteristics - 120 mn Without disconnection or with safety disconnection	UT	440 Vac withstand	
Residual Current Leakage current to Ground	Ipe	None	
Nominal discharge current 15 x 8/20 μs impulses	In	5 kA	
Max. discharge current max. withstand @ 8/20 μs by pole	Imax	10 kA	
Total Maximum discharge current max. total withstand @ 8/20 μs	Imax Total	20 kA	
Withstand on Combination waveform IEC 61643-11 Class III test: 1.2/50μs - 8/20μs	Uoc	10 kV	
Withstand on overvoltages IEEE C62.41.1		10 kV	
Protection mode(s)		Differential Mode	
Protection level L/N @ In (8/20μs)	Up L/N	1.5 kV	
Admissible short-circuit current	Iscrr	10 000 A	
Mechanical Characteristics			
Technology		VG Technology (MOV+GSG)	
Connection to Network		By screw terminals: 2.5mm ² max.	
Mounting		On plate	
Housing material		Thermoplastic UL94 V-0	
Operating temperature	Tu	-40/+85°C	
Protection rating		IP20	
Failsafe mode		Disconnection and AC line cut-off	
Disconnection indicator		LED green OFF and AC network cut-off	
Operating indicator		Green Led ON	
Dimensions		See diagram	
Disconnectors			
Thermal disconnector		Internal	
Installation ground fault breaker		Type 'S' or delayed	
Standards			
Standards compliance		EN 61643-11 / IEC 61643-11	
Certification		KEMA / ENEC05	
Part number		837221	

