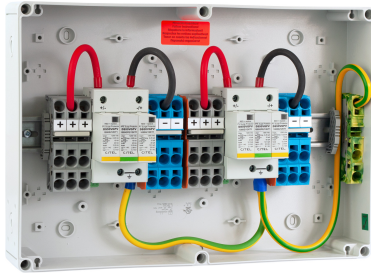




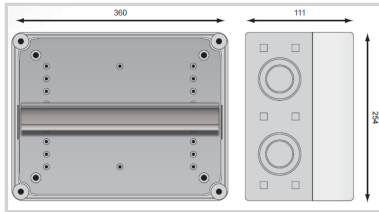
CITEL

PV-DC-Junction box

GAK2.K4(6)x16.K2x16.51VG-12



- › Generator junction box for 2 MPPT tracker / 4 strings
- › Integrated surge protection device (2x DS50VGPVS-1000G/12KT1, type 1+2)
- › Protection class IP65
- › Connection via spring terminals



Electrical Characteristics		
SPD type	IEC	1+2
Network		PV network 1000 Vdc
Nominal DC voltage	Un-dc	1000 Vdc
Max. PV operating voltage	Ucpv	1200 Vdc
Rated insulation voltage <i>Ui</i>	Ui	1000 Vdc
Rated current <i>InA</i>	InA	2x 60 A
Rated string current	InC	2x 40 A
Mechanical Characteristics		
Input / per MPPT		Spring clamp terminals / 4x16mm ²
Output / per MPPT		Spring terminals / 2x16mm ²
Ground connection terminal		Spring clamp terminals / 16mm ²
Cable gland		Metric / 30x M16 (Ø 5-7mm)
Housing material		UV and ozone resistant, fiberglass reinforced polycarbonate with semi-transparent cover
Dimensions		WxHxD (mm): 360 x 254 x 111
Ambient temperatures		Indoor: -5°C to max. +40°C (+35°C 24h average) / Outdoor: -25°C to max. +40°C (+35°C 24h average)
Humidity		Indoor: max. 50% at +40°C, max. 90% at 20°C (non-condensing) / Outdoor: 95% for a short time at +25°C (non-condensing)
Protection rating		IP 65
Protection class		Class II
Impact resistance		IK 8
Pressure compensation element		Existing
Standards		
Standards compliance		DIN EN 50539-11 / DIN EN IEC 61439-2
Part number		
158209		

