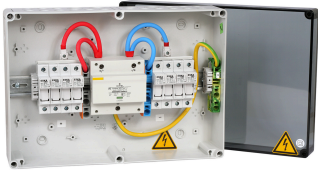




CITEL

PV-DC-Junction box

GAK1.K4x16.K2x16.S.61VG-1



- ▶ Generator junction box for 1 MPP tracker / 4 strings
- ▶ Surge protection integrated (DS60VGPV-1000G/51, type 1+2)
- ▶ With string fuses (10x38 in +/- pole)
- ▶ Protection class IP65
- ▶ Connection via screw/spring terminals



Electrical Characteristics		
SPD type	IEC	1+2
Network		PV network 1000 Vdc
Nominal DC voltage	Un-dc	1000 Vdc
Max. PV operating voltage	Ucpv	1200 Vdc
Rated insulation voltage <i>Ui</i>	Ui	1000 Vdc
Rated current <i>InA</i>	InA	60 A
Rated string current	InC	12 A
Mechanical Characteristics		
Protection rating		IP65
Fuse holder		Size 10x38, 4x in +/- pole
Input / per MPPT		Spring clamp terminals / 4x 6mm ²
Output / per MPPT		Spring terminals / 2x16mm ²
Ground connection terminal		Spring clamp terminals / 16mm ²
Cable gland		4x M32 with multiple feed-through (16x Ø 5-7mm); 1x M20 (Ø 6-13mm)
Housing material		UV and ozone resistant, fiberglass reinforced polycarbonate with semi-transparent cover
Dimensions		WxHxD (mm): 400 x 300 x 132
Ambient temperatures		Indoor: -5°C to max. +40°C (+35°C 24h average) / Outdoor: -25°C to max. +40°C (+35°C 24h average)
Humidity		Indoor: max. 50% at +40°C, max. 90% at 20°C (non-condensing) / Outdoor: 95% for a short time at +25°C (non-condensing)
Protection class		Class II
Impact resistance		IK 8
Pressure compensation element		Existing
Standards		
Standards compliance		DIN EN 50539-11 / DIN EN IEC 61439-2
Part number		
158403		

