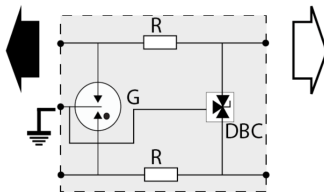
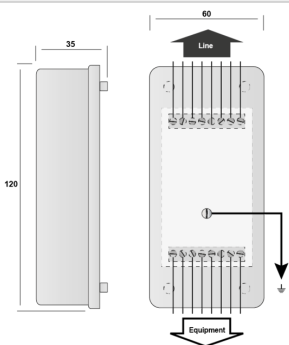


B280-48DBC



- ✦ 2-pair surge protection unit
- ✦ 48 V
- ✦ Removable protection circuit
- ✦ Wall mounting and screw connection
- ✦ UL497 A&B



Gb: 3-electrode gas tube
R: Resistor
DBC: 3-pole low capacitance diode

Electrical Characteristics		
Network		RNIS-T0, 48 V line
Nominal line voltage	Un	48 V
Max. DC operating voltage	Uc	53 Vdc
Max. frequency	f max.	> 20 MHz
Insertion loss		< 1 dB
Max. discharge current max. withstand @ 8/20 μs by pole	Imax	20 kA
Protection mode(s)		Common/Differential mode
Protection Level C3 (10/1000μs), 300 applications@10 A, X-X (Line/Line)	Up	75 V
Protection level C3 (10/1000μs), 300 applications@10 A, X-C (Line/Earth)	Up	20 V
Line resistance		< 4.7 Ohm
Mechanical Characteristics		
Technology		GDT+TVS diode
SPD configuration		2 pairs
Connection to Network		By screw terminal: cross section 0.4-1.5mm ²
Format		Wall mounting box
Mounting		Wall mounting by screws (not supplied)
Housing material		Thermoplastic UL94 V-0
Operating temperature	Tu	-40/+85°C
Protection rating		IP20
Failsafe mode		Short-circuit - transmission cut-off - fault mode 2
Spare module(s)		S280-48DBC
Dimensions		See diagram
Weight		0.043 kg
Standards		
Standards compliance		IEC 61643-21 / EN 61643-21 / UL497B
Certification		UL 497B
Part number		
72754		