



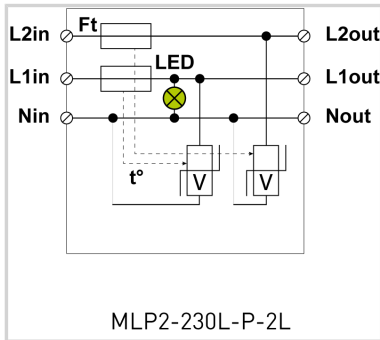
CITEL

MLP2-230L-P-2L



Specially developed spd with combined protection for 2-phase power supply (control phase):

- ▶ Many variants available depending on application
- ▶ With screw terminals or cable wiring
- ▶ IP65 versions
- ▶ For protection class I or II application
- ▶ Developed for Uoc: 10 kV and I_{max}: 10 kA for highest outdoor requirements according to IEEE & ANSI
- ▶ Optical error signalling



Electrical Characteristics			
SPD type	IEC		2+3
AC system			TT-TN
Nominal line voltage	Un		230-277 Vac
Max. AC operating voltage	Uc		305 Vac
Max. frequency	f max.		10 MHz
Max. load current @25°C	IL		2.5 A
Temporary Over Voltage (TOV) Characteristics - 5 sec. Without disconnection	UT		335 Vac withstand
Temporary Over Voltage (TOV) Characteristics - 120 mn Without disconnection or with safety disconnection	UT		440 Vac disconnection
Residual Current Leakage current to Ground	Ipe		None
Follow current	If		None
Nominal discharge current 15 x 8/20 µs impulses	In		5 kA
Max. discharge current max. withstand @ 8/20 µs by pole	I _{max}		10 kA
Total Maximum discharge current max. total withstand @ 8/20 µs	I _{max} Total		20 kA
Withstand on Combination waveform IEC 61643-11 Class III test: 1.2/50µs - 8/20µs	Uoc		10 kV / 5 kA
Withstand on overvoltages IEEE C62.41.1			10 kV / 10 kA
Protection mode(s)			Common/Differential mode
Protection level CM/DM @ In (8/20µs)	Up mc /md		1.5/1.5 kV
Admissible short-circuit current	I _{sc}		10 000 A
Mechanical Characteristics			
Mounting			Wall or plate
Housing material			Thermoplastic UL94 V-0
Operating temperature	Tu		-40/+85°C
Dimensions			See diagram
Disconnectors			
Thermal disconnector			Internal
Installation ground fault breaker			Type 'S' or delayed
Standards			
Standards compliance			IEC 61643-11 / EN 61643-11 / UL1449 ed.5
Part number			
741212			

