



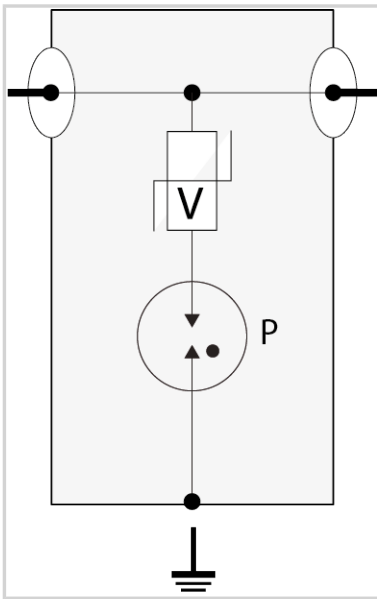
CITEL

Coaxial surge protector

CXF60-N/MF + Ground Kit



- Coaxial surge protector
- DC-500 MHz
- I_{max}: 6 kA
- Bi-directional, series installed



Electrical Characteristics		
Frequency range	f	DC-500 MHz
Insertion loss		< 0.2 dB
Return loss		> 19 dB
Impedance		50 ohms
VSWR		<1.25:1
Max. load current @25°C	IL	6 A
Max. discharge current <i>max. withstand @ 8/20 μs by pole</i>	I _{max}	6 kA
Protection mode(s)		Common mode
Protection level <i>@1kV/μs (C3)</i>	Up	< 800 V
Max Power		42 W
Mechanical Characteristics		
Connection to Network		Connector N Male/Female
Operating temperature	T _u	-50°C to +85°C
Protection rating		IP65
Attachment		Earthing kit
Standards		
Certification		UL 497E
RohS compliance		Yes
Part number		
62009		

