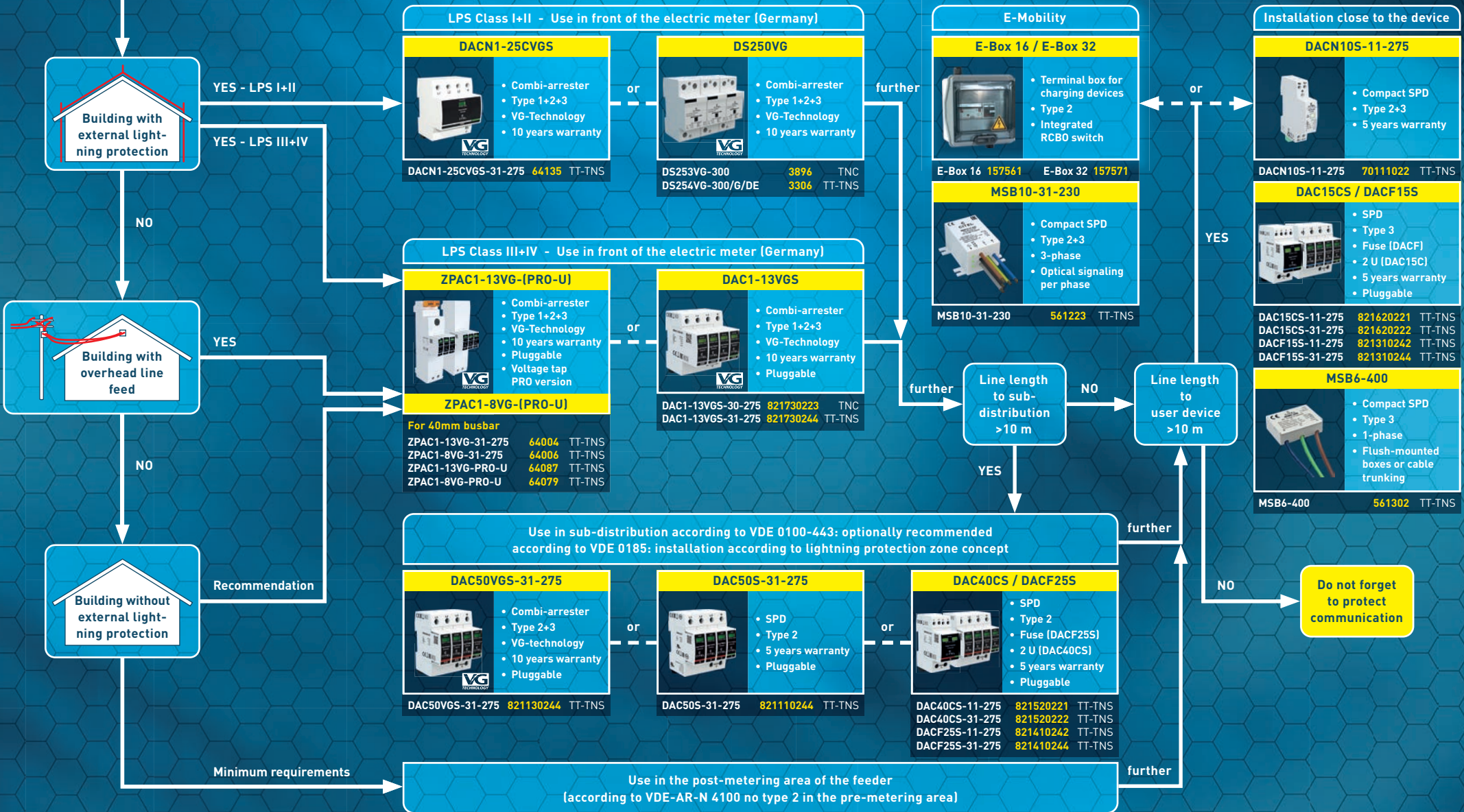


AC selection guide of devices for protection against transient overvoltages

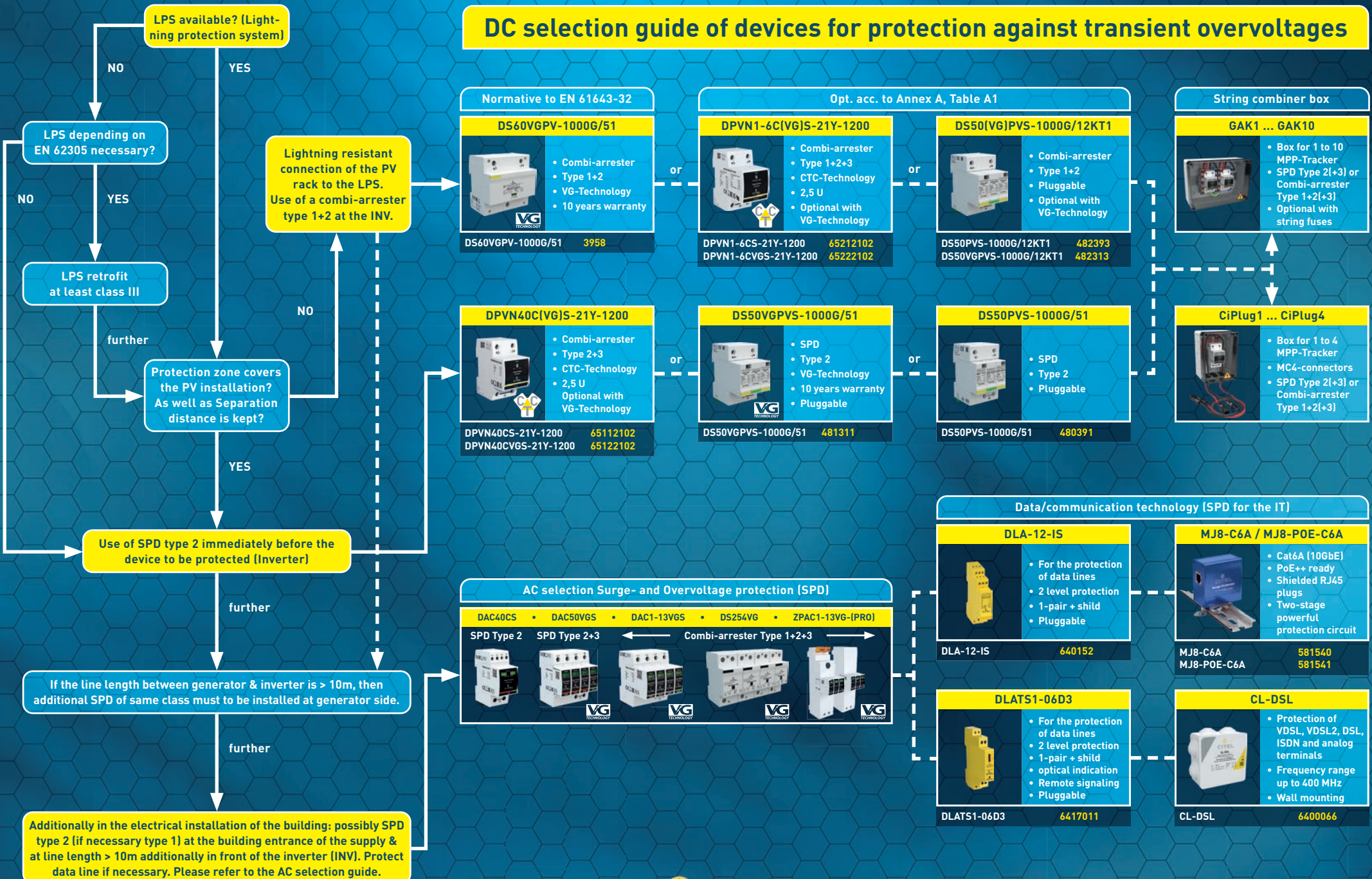
Easy selection in accordance with HD 60364-4-443 and -5-534



Specifications are subject to change without notice



DC selection guide of devices for protection against transient overvoltages



Normative to EN 61643-32

DS60VGPV-1000G/51

- Combi-arrester
- Type 1+2
- VG-Technology
- 10 years warranty

DS60VGPV-1000G/51 3958

Opt. acc. to Annex A, Table A1

DPVN1-6C(VG)S-21Y-1200

- Combi-arrester
- Type 1+2+3
- CTC-Technology
- 2,5 U
- Optional with VG-Technology

DPVN1-6CS-21Y-1200 65212102
DPVN1-6CVGS-21Y-1200 65222102

DS50(VG)PVS-1000G/12KT1

- Combi-arrester
- Type 1+2
- Pluggable
- Optional with VG-Technology

DS50PVS-1000G/12KT1 482393
DS50VGPVS-1000G/12KT1 482313

String combiner box

GAK1 ... GAK10

- Box for 1 to 10 MPP-Tracker
- SPD Type 2(+3) or Combi-arrester Type 1+2(+3)
- Optional with string fuses

DPVN40C(VG)S-21Y-1200

- Combi-arrester
- Type 2+3
- CTC-Technology
- 2,5 U
- Optional with VG-Technology

DPVN40CS-21Y-1200 65112102
DPVN40CVGS-21Y-1200 65122102

DS50VGPVS-1000G/51

- SPD
- Type 2
- VG-Technology
- 10 years warranty
- Pluggable

DS50VGPVS-1000G/51 481311

DS50PVS-1000G/51

- SPD
- Type 2
- Pluggable

DS50PVS-1000G/51 480391

CiPlug1 ... CiPlug4

- Box for 1 to 4 MPP-Tracker
- MC4-connectors
- SPD Type 2(+3) or Combi-arrester Type 1+2(+3)

AC selection Surge- and Overvoltage protection (SPD)

DAC40CS • DAC50VGS • DAC1-13VGS • DS254VG • ZPAC1-13VG-(PRO)

SPD Type 2 SPD Type 2+3 Combi-arrester Type 1+2+3

Data/communication technology (SPD for the IT)

DLA-12-IS

- For the protection of data lines
- 2 level protection
- 1-pair + shield
- Pluggable

DLA-12-IS 640152

MJ8-C6A / MJ8-POE-C6A

- Cat6A (10GbE)
- Po++ ready
- Shielded RJ45 plugs
- Two-stage powerful protection circuit

MJ8-C6A 581540
MJ8-POE-C6A 581541

DLATS1-06D3

- For the protection of data lines
- 2 level protection
- 1-pair + shield
- optical indication
- Remote signaling
- Pluggable

DLATS1-06D3 6417011

CL-DSL

- Protection of VDSL, VDSL2, DSL, ISDN and analog terminals
- Frequency range up to 400 MHz
- Wall mounting

CL-DSL 6400066

Additionally in the electrical installation of the building: possibly SPD type 2 (if necessary type 1) at the building entrance of the supply & at line length > 10m additionally in front of the inverter (INV). Protect data line if necessary. Please refer to the AC selection guide.

Power engineering: Flow chart based on VDE 0185-305-3, Supplement 5 and VDE 0100-712 and EN 61643-32



You can find other voltage variants on our homepage!

Specifications are subject to change without notice