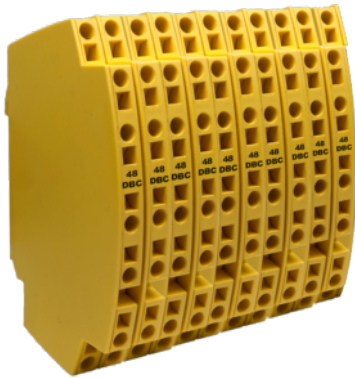




CITEL

1-pair monobloc Telecom surge protector

DLC-48DBC(10+3)



- High speed data transmission
- Common mode and differential mode protection
- Data lines, including those isolated from Earth
- Compact DIN rail enclosure, high density protection
- Protection of shield wire
- Location and test categories: D1, C2, C3
- IEC 61643-21 compliance



| Electrical Characteristics | | |
|---|------------------|---|
| Network | | RNIS-T0, 48 V line |
| Nominal line voltage | Un | 48 V |
| Max. DC operating voltage | Uc | 53 Vdc |
| Max. frequency | f max. | > 3 MHz |
| Insertion loss | | < 1 dB |
| Max. load current @25°C | IL | 300 mA |
| Max. discharge current max. withstand @ 8/20 µs by pole | I _{max} | 10 kA |
| Line inductance | | No |
| Protection level Following the test category C3 (IEC61643-21) - Line/Line | Up | 70 V |
| Impulse current 2 x 10/350µs Test - D1 Category | I _{imp} | 2.5 kA |
| Line/Line Nominal discharge current C2 Category | In L/L | 5 kA |
| Nominal Discharge Current, X-C (Line/Earth) 8/20µs Test x 10 - C2 Category | In L/PE | 5 kA |
| Line resistance | | < 4.7 Ohm |
| Mechanical Characteristics | | |
| Technology | | GDT+Clamping diode |
| SPD configuration | | 10-pair+shielded |
| Connection to Network | | By spring - max. cross section 1.5mm ² |
| Format | | DIN box |
| Mounting | | Symmetrical rail 35 mm (EN 60715) |
| Housing material | | Thermoplastic UL94 V-0 |
| Operating temperature | Tu | -40/+85°C |
| Ingress Protection rating | | IP20 (NEMA 2) |
| Failsafe mode | | Short-circuit |
| Disconnection indicator | | Transmission interrupt - default mode 2 |
| Dimensions | | See diagram |
| Weight | | 0.029 kg |
| Standards | | |
| Standards compliance | | IEC 61643-21 / EN 61643-21 / UL497B |
| Certification | | UL 497B |
| Part number | | |
| 641214 | | |

