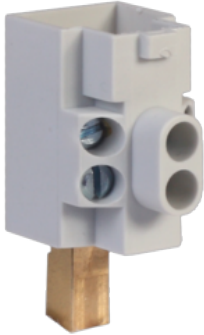




CITEL

Screw terminal for 'V' connection

KN T 1316I



- ↳ 'V' connection screw terminal for SPD
- ↳ Improved connection for better efficiency
- ↳ 2 x 35 mm² wire connection
- ↳ Adapted to DAC/DDC surge protectors



	Electrical Characteristics	
	Max. load current @25°C	IL 32 A
Mechanical Characteristics		
Mounting	On DS range terminal	
Housing material	Polycarbonate UL94 V-0	
Dimensions	See diagram	
Contacts	Brass	
Mini-max. cross section	2.5 - 35 mm ² (13-2 AWG)	
Weight	0.042 kg	
Part number		
151000		

