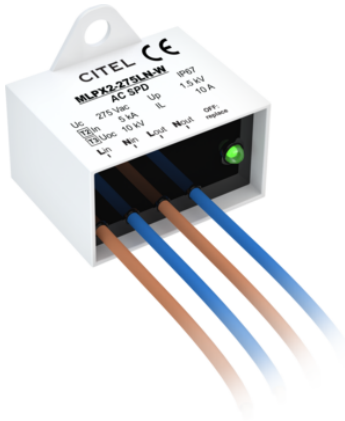


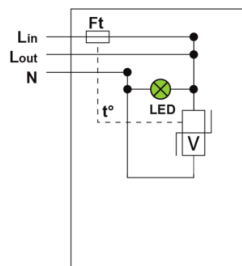
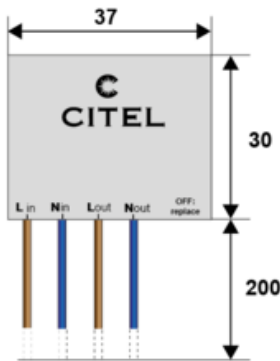
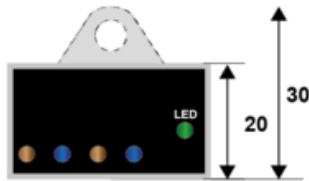


CITEL

MLPX2-275LN-W



- ↳ Ultra compact Type 2+3 hard wired surge protectors
- ↳ Lin/Nin and Lout/Nout
- ↳ Wall mounting and hard wired connection
- ↳ Bracket breakable
- ↳ Protection rating : IP67
- ↳ Disconnection signaling by indicator
- ↳ AC disconnection in case of end of life
- ↳ EN 61643-11, IEC 61643-11 and UL1449 4ed. compliance



V: Varistor
Ft: Thermal fuse
LED: Disconnection indicator
t°: Thermal disconnection system

Electrical Characteristics

SPD type (following IEC tests)		2+3
Network		230-277 V single-phase
AC system		TT/TN
Max. AC operating voltage	Uc	275 Vac
Max. load current	IL	10 A
Temporary Over Voltage (TOV) Characteristics - 5 sec. (Without disconnection)	UT	335 Vac withstand
Temporary Over Voltage (TOV) Characteristics - 120 mn (Without disconnection or with safety disconnection)	UT	440 Vac disconnection
Temporary Over Voltage N/PE (TOV HT) (Without disconnection or with safety disconnection)	UT	1200 V/300A/200 ms disconnection
Residual Current (Leakage current to Ground)	Ipe	None
Nominal discharge current (15 x 8/20 μ s impulses)	In	5 kA
Max. discharge current (max. withstand @ 8/20 μ s by pole)	Imax	10 kA
Total Maximum discharge current (max. total withstand @ 8 /20 μ s)	Imax Total	20 kA
Withstand on Combination waveform IEC 61643-11 (Class III test: 1.2/50 μ s - 8/20 μ s)	Uoc	10 kV
Withstand on overvoltages IEEE C62.41.1		10 kV / 10 kA
Protection mode(s)		Differential Mode
Protection level L/N (@ In (8/20 μ s))	Up L/N	1.5 kV
Admissible short-circuit current	Iscrr	10 000 A

Mechanical Characteristics

Technology		MOV
Connection to Network		by solid wires : 0.75 mm ²
Mounting		Wall or plate
Housing material		Thermoplastic UL94 V-0
Operating temperature	Tu	-40/+85°C
Protection rating		IP67
Failsafe mode		Disconnection and AC line cut-off
Disconnection indicator		Led green OFF and AC network cut-off
Voltage/operating indicator		Green Led ON
Dimensions		See diagram
Weight		0.040 kg

Disconnectors

Thermal disconnector		Internal
Installation ground fault breaker		Type 'S' or delayed

Standards

Standards compliance		IEC 61643-11 / EN 61643-11 / UL1449 ed.4
----------------------	--	--

Part number

713567

