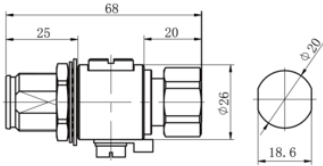
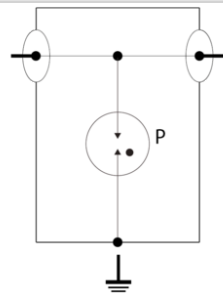




- RF coaxial surge protector
- 3.5 GHz
- Connectors: 4310
- Low insertion loss
- Removal GDT
- DC-pass
- Bi-directional protection



	<b>Electrical Characteristics</b>		
	Max. DC operating voltage	Uc	400 Vdc
	Frequency range	f	DC-3.5 GHz
	Insertion loss		< 0.2 dB
	Return loss		> 20 dB
	Impedance		50 ohms
	VSWR		<1.2:1
	Max. load current @25°C	IL	10 A
	Residual Current Leakage current to Ground	Ipe	None
	Max. discharge current max. withstand @ 8/20 μs by pole	I <sub>max</sub>	20 kA
	Protection mode(s)		Common mode
	Protection level @1kV/μs (C3)	Up	< 1200 V
	Impulse current 2 x 10/350μs Test - D1 Category	I <sub>imp</sub>	1 kA
	Nominal discharge current C2 Category	I <sub>n</sub>	5 kA
	Max Power		780 W
	Typical let through energy (50 ohms) input 4kV 1.2/50μs - 2kA 8/20μs		1100 μJ
	DC Pass		Yes
	Insulation resistance	IR	≥10 GOhms
	<b>Mechanical Characteristics</b>		
	Technology		Gas discharge tube
	Connection to Network		Connector 4.3-10 Male/Female
	Mounting		Feedthrough
	Housing material		Brass/Surface plating: Cu Zn Sn
	Operating temperature	Tu	-40/+85°C
	Protection rating		IP65
	Failsafe mode		Short-circuit
	Disconnection indicator		Transmission interrupt
	Spare module(s)		BBHF-90V
	Dimensions		See diagram
	Contacts		Bronze/Surface Au-Ag
	Weight		0.159 kg
	<b>Standards</b>		
	Standards compliance		IEC 61643-21 / EN 61643-21 / UL497E
	RohS compliance		Yes
	<b>Part number</b>		
	60907		



P: 2-electrode gas discharge tube

