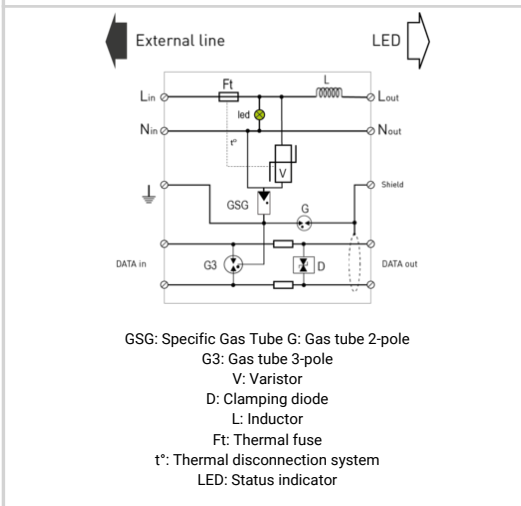
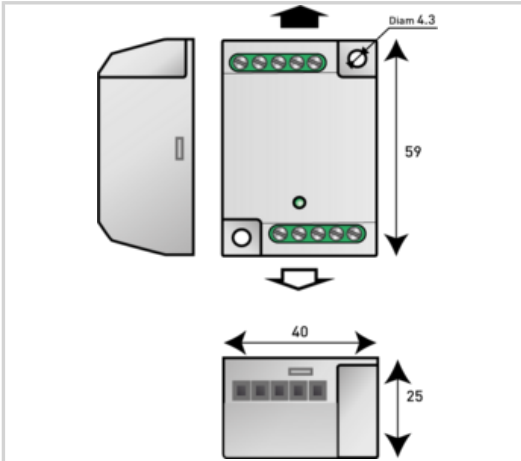


MLPCH1-230L-V/DL



- ▶ Type 2 (or 3) surge protector for Class 1 LED Lighting
- ▶ Combined AC/Dataline surge protection
- ▶ DALI, DMX, RS485, 0-10V datalines compliance
- ▶ Shield wire management
- ▶ Optimized coordination with driver
- ▶ Compact dimensions
- ▶ Screw connection
- ▶ Max. discharge current 10 kA
- ▶ Certified IEC 61643-11 and IEC 61643-21



Electrical Characteristics	
Network	230 V single-phase
AC system	TT-TN
Max. Data operating voltage	Uc 28 Vdc
Max. AC operating voltage	Uc 320 Vac
Max. load current @25°C	IL 2.5 A
Temporary Over Voltage (TOV) Characteristics - 5 sec. Without disconnection	UT 335 Vac withstand
Temporary Over Voltage (TOV) Characteristics - 120 mn Without disconnection or with safety disconnection	UT 440 Vac disconnection
Residual Current Leakage current to Ground	Ipe None
Nominal discharge current 15 x 8/20 μs impulses	In 5 kA
Max. discharge current max. withstand @ 8/20 μs by pole	Imax 10 kA
Withstand on Combination waveform IEC 61643-11 Class III test: 1.2/50μs - 8/20μs	Uoc 10 kV / 5 kA
Protection mode(s)	Common/Differential mode
Protection level Following the test category C3 (IEC61643-21) - Line/Line	Up 50 V
Protection level L/N @ In (8/20μs)	Up L/N 1.5 kV
Protection level N/PE @ In (8/20μs)	Up N/PE 1.5 kV
Line/Line Nominal discharge current C2 Category	In L/L 5 kA
Admissible short-circuit current	Iscsr 10 000 A
Mechanical Characteristics	
Technology	MOV+GDT
Connection to Network	By screw terminal: 1.5mm ² max.
Mounting	On plate
Housing material	Thermoplastic UL94 V-0
Operating temperature	Tu -40/+85°C
Protection rating	IP20
Failsafe mode	Disconnection, Green Led OFF and power cut off
Disconnection indicator	LED green OFF and AC network cut-off
Dimensions	See diagram
Weight	0.056 kg
Standards	
Standards compliance	IEC 61643-11 / EN 61643-11 / IEC 61643-21 / EN 61643-21 / UL1449 ed.5
Certification	KEMA
Part number	833223

