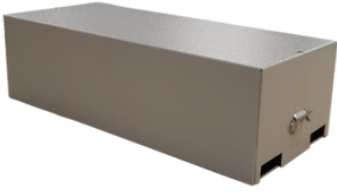
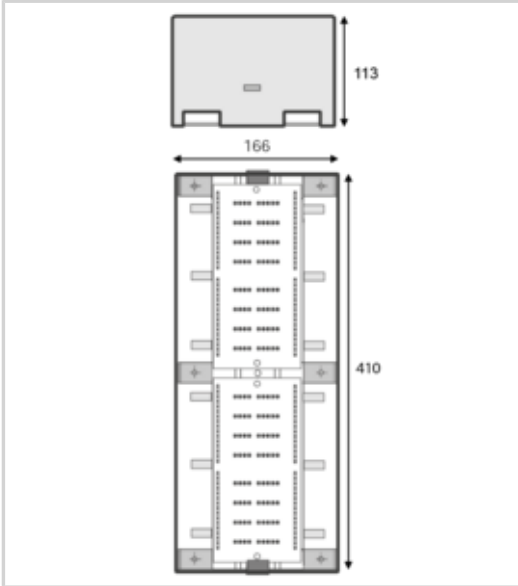




BN32-V



- ↳ Metal enclosures for E280
- ↳ Max. number of pairs : 32



Electrical Characteristics		
Network		Low current
Max. frequency	f max.	> 20 MHz
Insertion loss		< 1 dB
Max. load current @25°C	IL	10 A
Max. discharge current <i>max. withstand @ 8/20 μs by pole</i>	Imax	10 kA
Impulse current <i>2 x 10/350μs Test - D1 Category</i>	limp	2.5 kA
Nominal discharge current <i>C2 Category</i>	In	5 kA
Mechanical Characteristics		
SPD configuration		32 pairs max
Format		Metallic box
Mounting		Wall
Housing material		Metal
Operating temperature	Tu	-40/+85°C
Protection rating		IP20
Connection		screw terminal - max. section 1,5 mm²
Max. number of E280s		16.0000
Max. number of pairs		32.0000
Dimensions		See diagram
Weight		2.051 kg
Part number		
71377		

