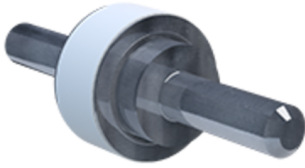


# BF P100 500/20



- ↳ Isolating spark gap
- ↳ 2-electrode
- ↳ No radioactive

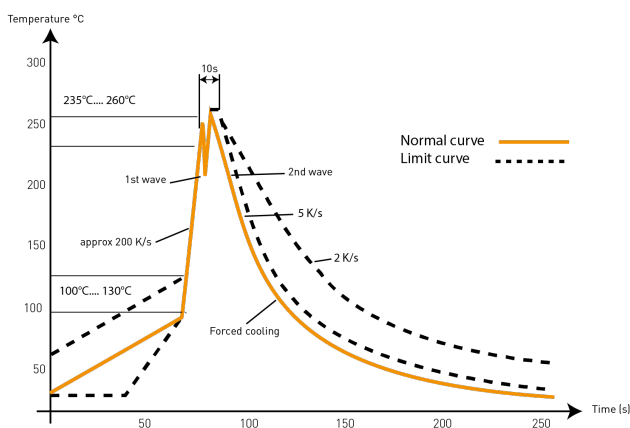


Electrical Characteristics		
DC sparkover voltage (100V/s)		400-600 V
DC spark voltage tolerance (100V/s)		+/- 20%
Impulse Spark-over Voltage 1.2/50µs to 6kV		< 1200 V
Follow current	If	Yes
Nominal discharge current (15 x 8/20 µs impulses)	In	80 kA
Max. discharge current (max. withstand @ 8/20 µs 1 time)	Imax	100 kA
Impulse current by pole (max. withstand 10/350µs by pole)	Iimp	50 kA
Max. capacitance	C	< 7 pF
Insulation resistance	IR	>1 Gohm
AC discharge current (50Hz)		100 A
DC Holdover voltage ( R = 300 ohms in serie R = 150 ohms; 100nF en parrallel)		≥ 80 V
Mechanical Characteristics		
Operating and storage temperature		-40°C / +90°C
Packaging		20 units per cardboard
Dimensions		See diagram
Standards		
Standards compliance		IEC 61643-11 / IEC 61643-311
RohS compliance		Yes
Part number		
<b>90231322</b>		

Note: NQA Niveau II 0,65, ISO DIN 2859

## Soldering recommendation

Wave soldering cycle for gas discharge tubes:



The curve is conform with the standard test: IEC 60068 part 2-58.

Annotation:

The soldering oven (reflow or wave) for gas discharge tube with failsafe mechanism must to be define with precaution.